

64 9 274 5984 5430 5.430

1 @ 1574



STAINLESS ENGINEERING CO LTD
STAINLESS STEEL, ALUMINIUM AND FABRICATED
TITANIUM COMPONENTS
FACTORY (BY APPOINTMENT)

17 FORD ROAD
LONDON
E11 1AB

TITLE

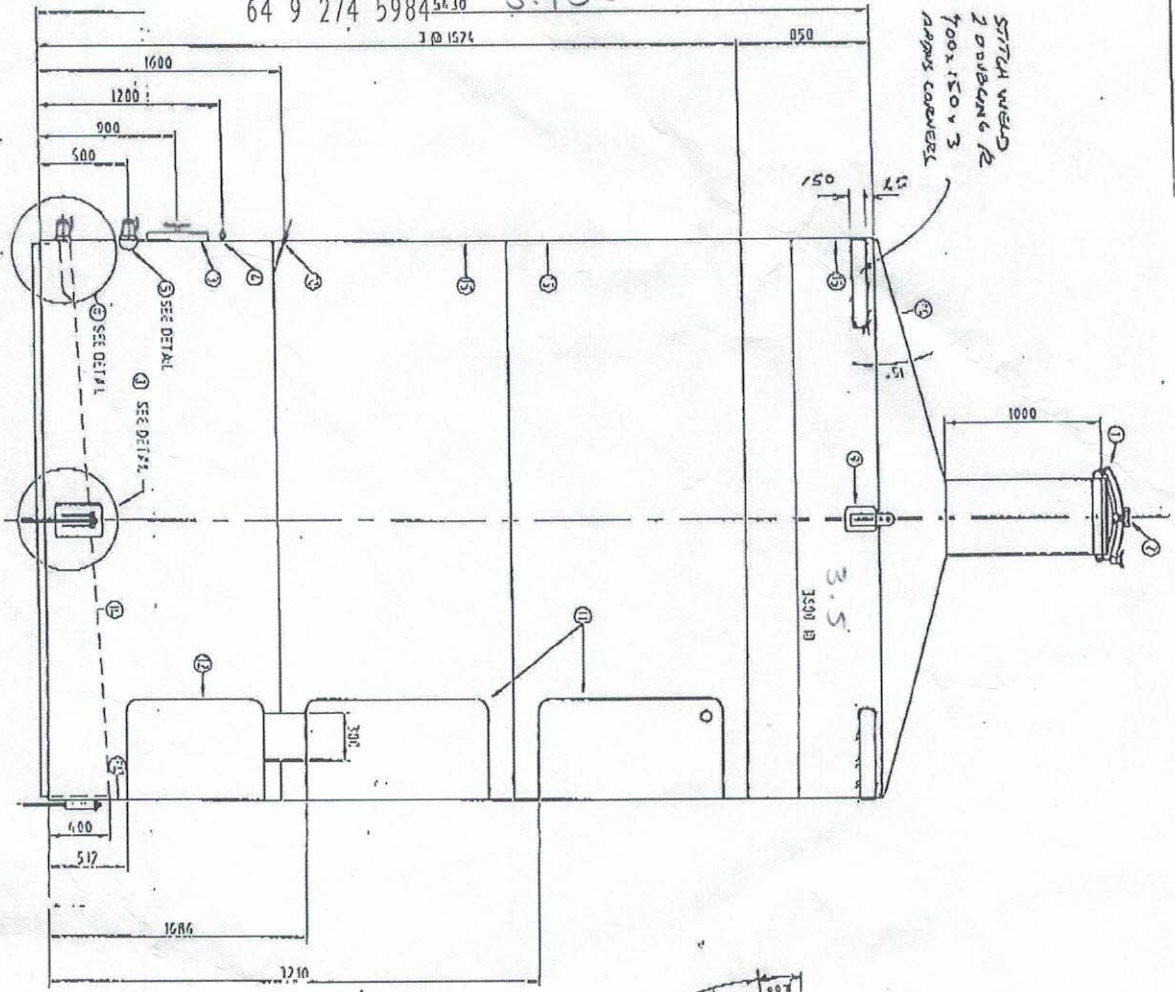
54,000 LITRE



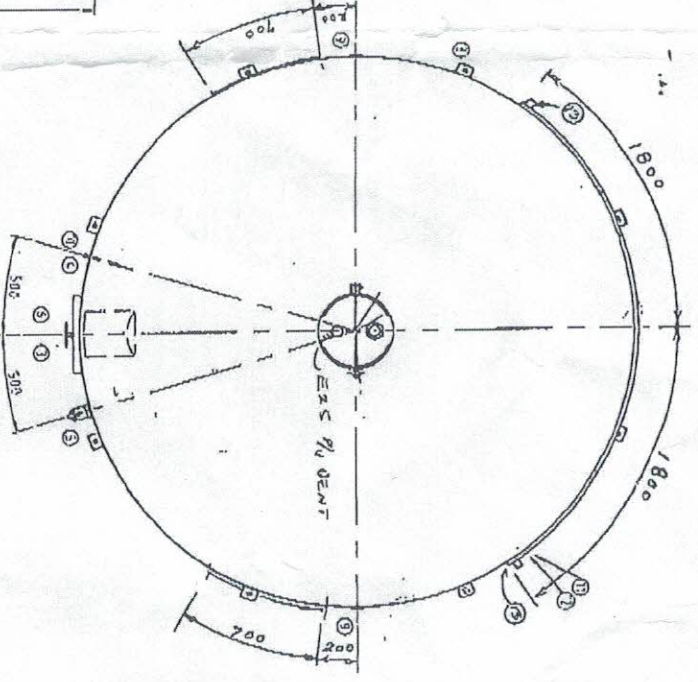
WINE TANKS

ELEVATION - FITTINGS ROTATED FOR CLARITY

FINISH



PLAN - SHOWING TRUE ORIENTATION OF FITTINGS



1	OLDEN SLOPEWAY ON TUBING RISER
2	Ø75 R1/2" NPT HEX NUT BLANK & SEAL + EAS 9/0
3	Ø80mm x 100mm CRYSTAL WAYWAY
4	SAMPLE VALVE HD Ø45G + 2.0SS VALVE Ø58 R1/2" CWDR.
5	Ø53 R1/2" VALVE Ø58 R1/2" CWDR.
6	Ø53 R1/2" VALVE Ø58 R1/2" CWDR.
7	Ø53 R1/2" VALVE Ø58 R1/2" CWDR.
8	Ø53 R1/2" VALVE Ø58 R1/2" CWDR.
9	Ø53 R1/2" VALVE Ø58 R1/2" CWDR.
10	Ø53 R1/2" VALVE Ø58 R1/2" CWDR.
11	Ø53 R1/2" VALVE Ø58 R1/2" CWDR.
12	Ø53 R1/2" VALVE Ø58 R1/2" CWDR.
13	Ø53 R1/2" VALVE Ø58 R1/2" CWDR.
14	Ø53 R1/2" VALVE Ø58 R1/2" CWDR.
15	Ø53 R1/2" VALVE Ø58 R1/2" CWDR.
16	Ø53 R1/2" VALVE Ø58 R1/2" CWDR.
17	Ø53 R1/2" VALVE Ø58 R1/2" CWDR.
18	Ø53 R1/2" VALVE Ø58 R1/2" CWDR.
19	Ø53 R1/2" VALVE Ø58 R1/2" CWDR.
20	Ø53 R1/2" VALVE Ø58 R1/2" CWDR.
21	Ø53 R1/2" VALVE Ø58 R1/2" CWDR.
22	Ø53 R1/2" VALVE Ø58 R1/2" CWDR.
23	Ø53 R1/2" VALVE Ø58 R1/2" CWDR.
24	Ø53 R1/2" VALVE Ø58 R1/2" CWDR.
25	Ø53 R1/2" VALVE Ø58 R1/2" CWDR.
26	Ø53 R1/2" VALVE Ø58 R1/2" CWDR.
27	Ø53 R1/2" VALVE Ø58 R1/2" CWDR.
28	Ø53 R1/2" VALVE Ø58 R1/2" CWDR.
29	Ø53 R1/2" VALVE Ø58 R1/2" CWDR.
30	Ø53 R1/2" VALVE Ø58 R1/2" CWDR.
31	Ø53 R1/2" VALVE Ø58 R1/2" CWDR.
32	Ø53 R1/2" VALVE Ø58 R1/2" CWDR.
33	Ø53 R1/2" VALVE Ø58 R1/2" CWDR.
34	Ø53 R1/2" VALVE Ø58 R1/2" CWDR.

SCALE	DATE
NTS	09/07/07
5291	13/04/1/03